

BaxterStorey EMS - Objectives and Targets Update

Objective 1

To reduce the consumption of electricity at the Waterfront per full time equivalent (FTE)

Target

Reduce by 5% by December 2008 based on annual consumption pro rata per full time equivalent (FTE)

Programme

- Staff awareness campaign, labelling, training
- PIR lighting installed
- Printers on duplex reducing number of copies made
- More efficient energy saving copier and franking machine
- Timers on water boiler and coffee machine
- All PCs switched off at night

Progress

In the full twelve months of 2007 we consumed 230,925 kWh of electricity at the Waterfront representing an average of 8.10 kWh per FTE per day (assuming 252 office working days).

In the full twelve months of 2008 we consumed 286,462 kWh of electricity at the Waterfront representing an average of 7.65 kWh per FTE per day (assuming 252 office working days).

This shows a like for like reduction 0.45 kWh per person per day or 5.56%.

Conclusion

Energy consumption has increased year on year at the Waterfront, however the population on site has increased by 50 or 43%. Through close monitoring, awareness, PIRs, timer switches and good housekeeping we have exceeded our initial target by almost 0.56%. We are delighted to have achieved this in our second full year of running the EMS. The target for 2009 is to reduce by a further 5% on our 2008 figure.

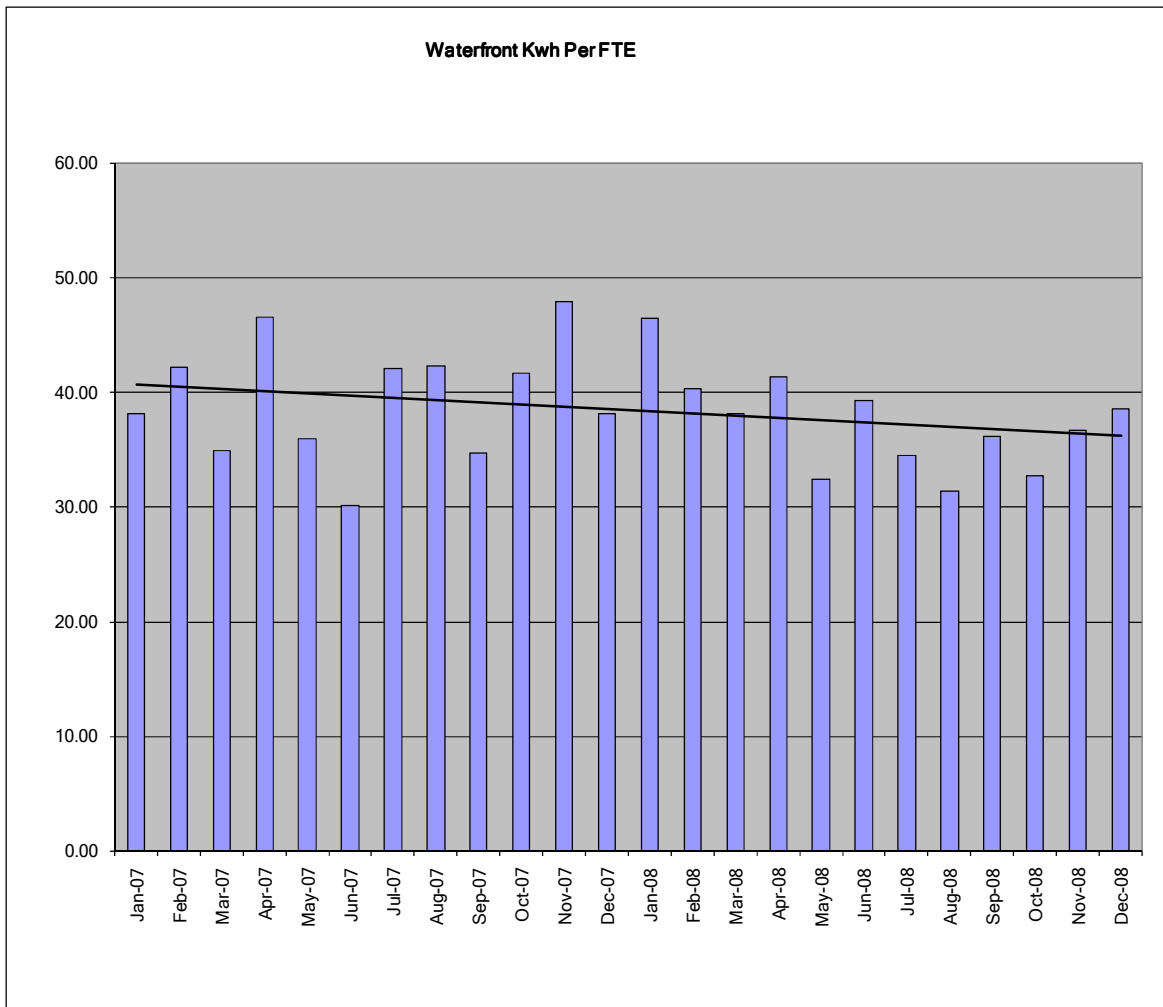
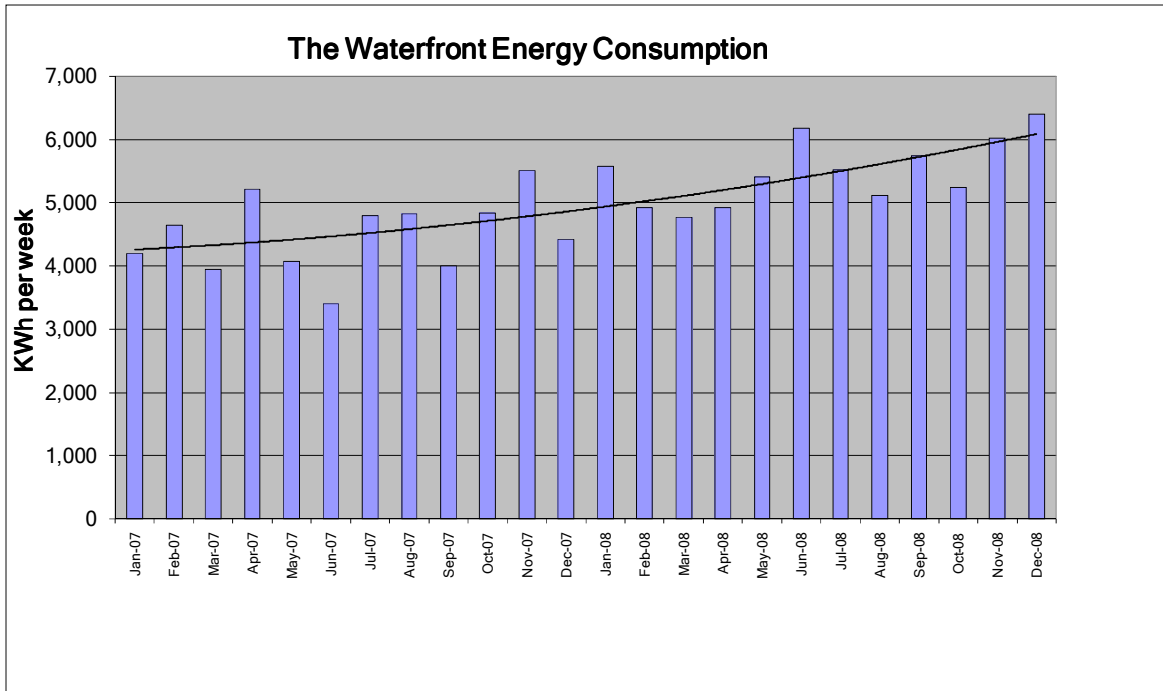
Notes

These figures include all energy used at the Waterfront by BaxterStorey;

Heating, cooling, hot water, computers, servers, copiers, printers, lights, phone chargers, water boilers, coffee machines etc

Doc Ref: EMS4.3.3.D	Produced 22/01/09	Printed 23/02/2009
Author: Mike Hanson	Version 3	Page 1 of 9

BaxterStorey EMS - Objectives and Targets Update



BaxterStorey EMS - Objectives and Targets Update

Objective 2

To reduce the level of carbon emissions produced by company vehicles

Target

Reduce CO2 emissions by 10% by December 2008 based on annual consumption pro rata to the number of BaxterStorey locations

Programme

- Staff awareness campaign, efficient driving
- Revised policy to encourage lower emissions vehicles
- Greater emphasis on train travel

Progress

In the full twelve months of 2007 a total of 60,163 litres of diesel and 76,777 litres of petrol were consumed by BaxterStorey vehicles, jointly this consumption produced 339,028 KgCO2 or 339 tonnes.

In the full twelve months of 2008 a total of 71,187 litres of diesel and 70,138 litres of petrol were consumed by BaxterStorey vehicles, jointly this consumption produced 353,522 KgCO2 or 353.5 tonnes.

This shows a like for like increase of 14,494 KgCO2 (14.5 tonnes) or 4.28%

In the same period the total number of BaxterStorey locations increased by 28%. Taking into account this growth we have achieved a reduction of 18.9%.

Conclusion

This is a good result when considering the growth of the company year on year. We feel confident that we can achieve a further 10% reduction during 2009 due to many lease cars being replaced this year and continued true effect of the revised car policy coming into effect which actively encourages the choice of a lower emission vehicle. You can how the shift has happened from petrol to diesel over the last two years which is as a direct result of improved choice and performance of diesel vehicles and recognition of the improved efficiency of a diesel even though the CO2 per g/km is slightly higher.

Notes

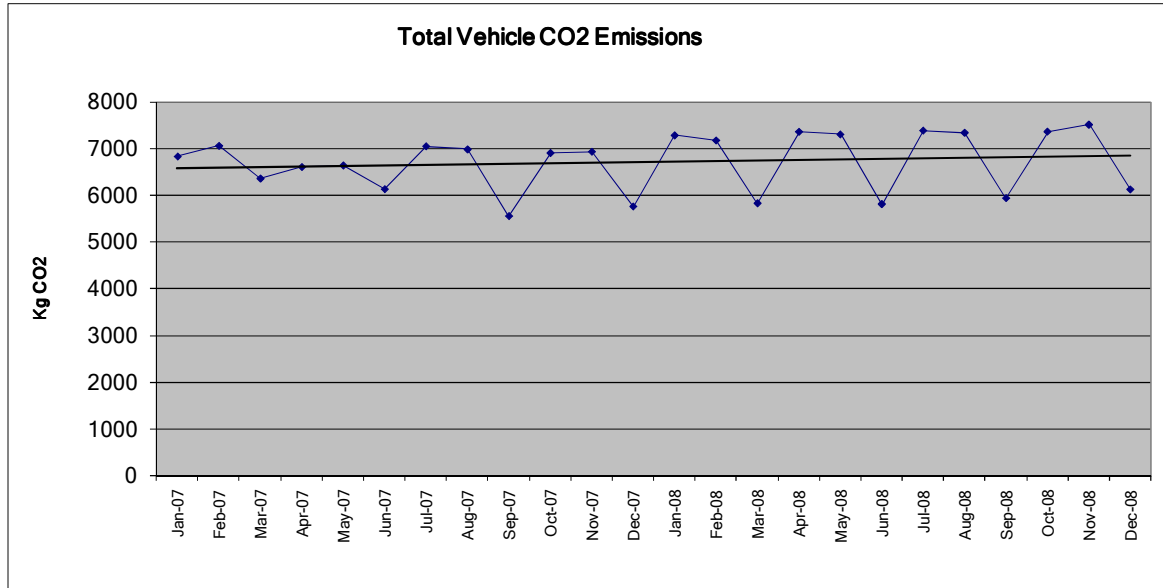
Petrol produces emissions of 2.3 Kg of CO2 per litre of fuel burned

Diesel produces emissions of 2.7Kg of CO2 per litre of fuel burned

Doc Ref: EMS4.3.3.D	Produced 22/01/09	Printed 23/02/2009
Author: Mike Hanson	Version 3	Page 3 of 9

BaxterStorey EMS - Objectives and Targets Update

Although diesel produces more CO2 per litre plus a greater level of airborne particulates, diesel engines are hugely more efficient than petrol and therefore the g/km of CO2 are greatly reduced and therefore lower than an equivalent engine sized petrol car.



Jan - Dec	2007	2008	2007	2008	Total CO2	Total CO2
	Litres	Litres	CO2	CO2	Variance	Variance
diesel	60,163.38	71,186.93	162,441.13	192,204.71	29,763.58	15.49%
petrol	76,777.01	70,138.20	176,587.12	161,317.86	- 15,269.26	-9.47%
	136,940.39	141,325.13	339,028.25	353,522.57	14,494.32	4.28%

Objective 3

Reduce amount of CO2 produced as a result of paper usage by BaxterStorey at the Waterfront for printing and copying

Target

Reduce the CO2 emissions by 10% by December 2008 based on annual consumption

Programme

- Staff awareness campaign on duplex copying and printing and reading from screen
- Default setting changed to duplex on all printers
- Change to 100% post consumer waste paper for all copying and printing

Doc Ref: EMS4.3.3.D	Produced 22/01/09	Printed 23/02/2009
Author: Mike Hanson	Version 3	Page 4 of 9

BaxterStorey EMS - Objectives and Targets Update

Progress

In the full twelve months of 2008 a total of 1,760 reams (500 sheets) of 100% post consumer waste recycled paper were used in the printers and copiers at the Waterfront by BaxterStorey. This consumption produced 12,760 Kg CO₂ or 12.8 tonnes.

In June 2006 BaxterStorey changed to 100% post consumer waste recycled paper and duplex printing became the default on most printers.

Like for like comparison shows a saving of 3,977 Kg CO₂ (4 tonne) against an equivalent volume of virgin paper.

In 2007 the average FTE is 114 with total reams of 1,345 this shows that in 2007 each member of the team at the waterfront used 11.79 reams of paper in the year or 0.98 reams per month.

In 2008 the average FTE is 149 with total reams of 1,760 this shows that in 2008 each member of the team at the waterfront used 11.81 reams of paper in the year or 0.98 reams per month.

Conclusion

This result shows that paper usage has been consistent with the numbers of FTE in the building. It is unlikely without technological changes that the volumes of paper will reduce pro rata.

Target for 2009 is a further reduction by 5%.

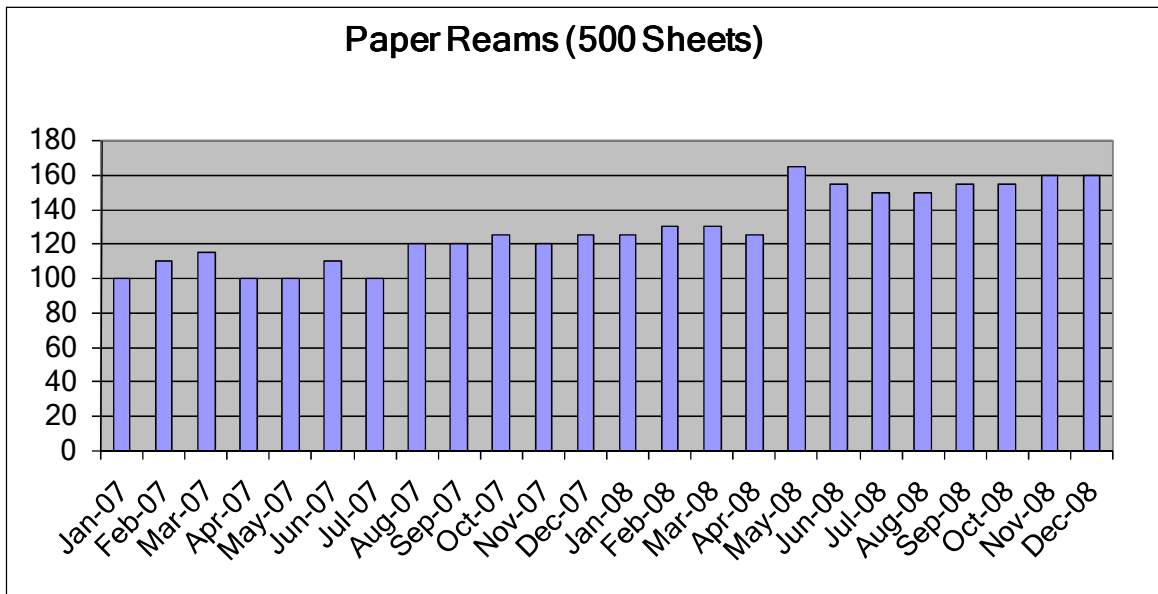
Notes

CO₂ produced as a result of the manufacture of virgin paper equates to 9.5kg of CO₂ per ream (one ream = 500 sheets)

CO₂ produced as a result of the manufacture of recycled paper (100% post consumer waste) equates to 7.25kg per ream

Doc Ref: EMS4.3.3.D	Produced 22/01/09	Printed 23/02/2009
Author: Mike Hanson	Version 3	Page 5 of 9

BaxterStorey EMS - Objectives and Targets Update



Objective 4

Increase volume of mixed recyclables at Waterfront and subsequent reduction in general waste produced per FTE

Target

10% increase in mixed recyclables in KG by December 2008 per FTE

Programme

- Staff awareness campaign on recycling and recycling process
- Number of general waste bins reduced to four small bins and mixed recycling bins increased to eleven

Progress

In the full twelve months of 2007 a total of 2,175 kg of general waste and 8,200 kg of mixed recyclable material were produced by BaxterStorey at the Waterfront. This equates to 0.36kg of total waste produced per FTE per day.

In the full twelve months of 2008 a total of 1,790 kg of general waste and 9,675 kg of mixed recyclable material were produced by BaxterStorey at the Waterfront. This equates to 0.52kg of total waste produced per FTE per day.

This shows a reduction in general waste of 385kg or 17.7% and an increase of recycled material of 1,390 kg or 16.9%.

In total the amount of waste produced by BaxterStorey at the Waterfront has increased by 9.6%.

Doc Ref: EMS4.3.3.D	Produced 22/01/09	Printed 23/02/2009
Author: Mike Hanson	Version 3	Page 6 of 9

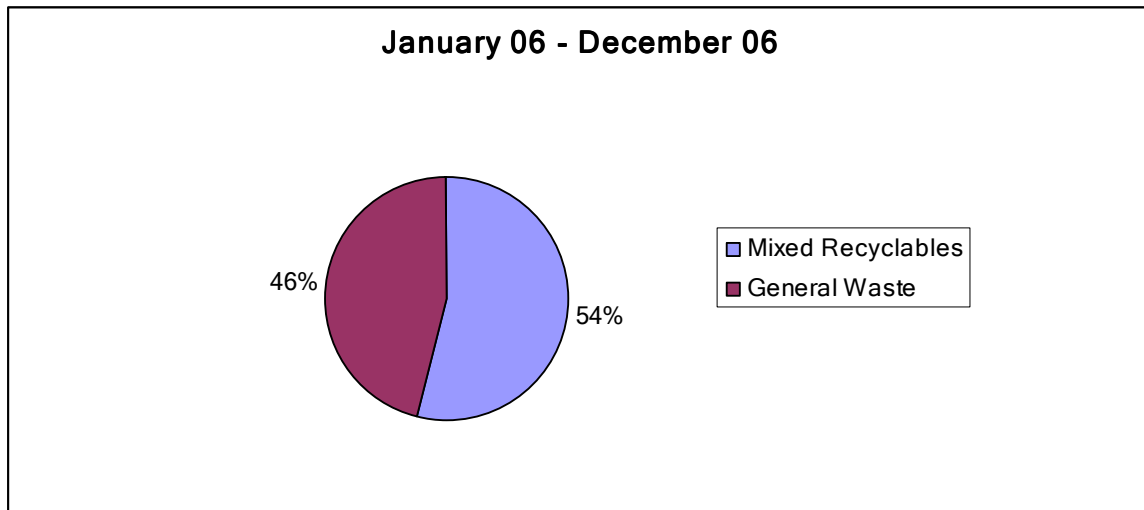
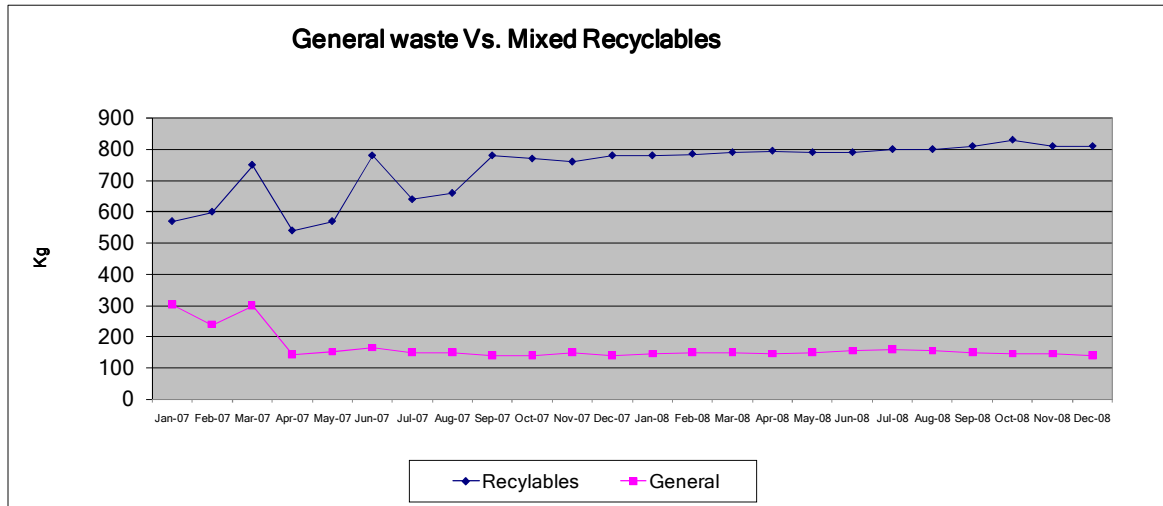
BaxterStorey EMS - Objectives and Targets Update

Over the period there has been a 24% increase in locations which present a significant increase in post arriving, copy invoices etc which create a large amount of recyclable waste.

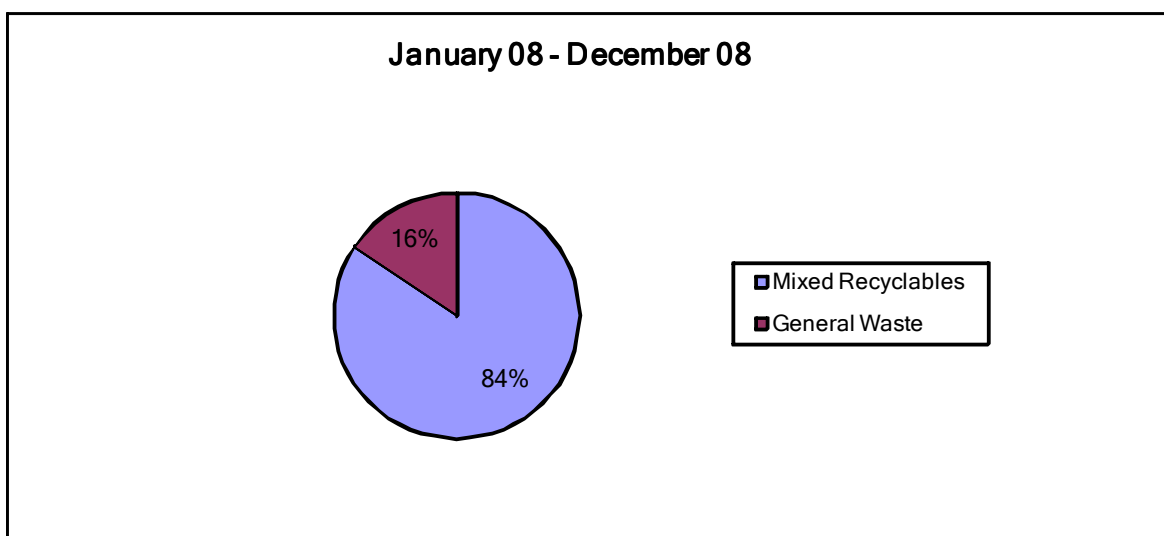
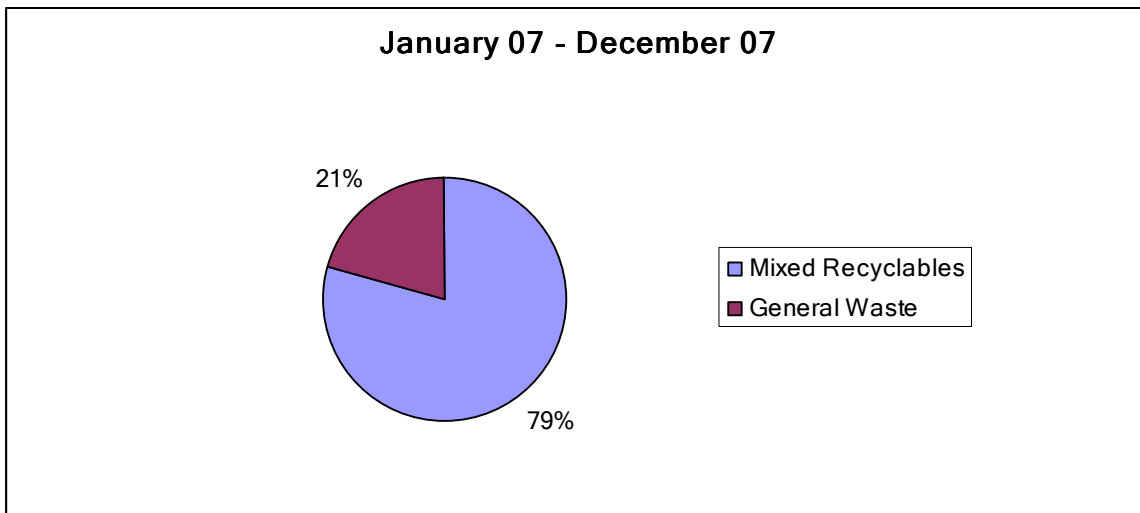
Conclusion

This is a fair result when considering the growth of the company year on year.

We have achieved our target of 10% increase and our target for 2009 is a further 5% improvement.



BaxterStorey EMS - Objectives and Targets Update



Objective 5

Reduce the Air miles flown by the company relative geographic spread of locations

Target

Reduce CO2 emissions by 5% by December 2008 based on annual consumption pro rata

Programme

- Staff awareness campaign and travelling options review

Doc Ref: EMS4.3.3.D	Produced 22/01/09	Printed 23/02/2009
Author: Mike Hanson	Version 3	Page 8 of 9

BaxterStorey EMS - Objectives and Targets Update

Progress

In the full twelve months of 2007 a total of 69,170 miles were flown by BaxterStorey emitting 10,376 kg of CO₂ (10.3 tonnes).

In the full twelve months of 2008 a total of 63,131 miles were flown by BaxterStorey emitting 9,469 kg of CO₂ (9.4 tonnes).

This shows a like for like reduction of 907 kg of CO₂, 0.9 tonnes or 8.7%

In the same period the total number of BaxterStorey locations increased by 24%

Conclusion

BaxterStorey has achieved the 5% reduction year on year and the target is a further reduction of 5% making use of the latest video conferencing technologies.

